



NETWORK ENGINEERING OY AB

FIX

CARGO SECURING



Product catalog 2025

TABLE OF CONTENTS

About NWE	Page 3
FIX Strap	Page 4
FIX Road	Page 7
FIX Road Special products	Page 11
FIX Truck-Safe	Page 12
FIX Marine	Page 13
Spare parts & accessories	Page 15





NWE NETWORK ENGINEERING OY AB

Based in Finland, NWE Network Engineering Oy Ab has more than 20 years of experience in the cargo securing field, both for road and sea transports worldwide. From the start, we proceeded from a central principle: our customers should always be able to rely on our products to meet the technical demands of the transport industry, even far into the future.



As of 2025, **NWE Network Engineering Oy Ab** is a part of the **FORANKRA Group**, owned by **Axel Johnson International**, a privately owned Swedish industrial group operating globally.



FIX CARGO SECURING

Our FIX original products – **FIX Strap**, **FIX Road**, **FIX Truck Safe** and **FIX Marine** – are the basis for the world's fastest and most secure system for securing cargo, manually or automatically. These patented and industry-changing systems save time in both loading and unloading, provide optimal lashing results, and make the job of a professional driver both safer and physically easier.





FIX STRAP

FIX Strap can be used for most transports, in a range of different cargo spaces. The system improves the driver's safety and streamlines the load-securing process.

FIX Strap system consists of securing straps that are attached to bungee cords, and our FIX Suspension system, which either runs on rails at the edges of the ceiling or are fixed mounted under the ceiling.

The system can be delivered with or without straps and is also available in a NORDIC version, with rubber cords manufactured according to a special compound that ensures the cords maintain their elasticity in Nordic weather conditions.



Complete movable FIX Strap system with 7 cargo securing straps. For 6-8m trailers

Includes, 6x2400mm C-tracks, 1x1000 C-track,
18 X Bracket 40, 10 x Joining/end bracket 80
7 x FIX bungee roller suspension units
7 x FIX 9,5m+0,5, 50mm ratchet straps complete with slide
adjusters & claw hooks.

Part number: 140100107

(The length of the straps is adapted to the inner height of the trailer)

Versions:

- Complete movable FIX Strap system NORDIC (see above) with 7 cargo securing straps.
- Movable system without straps, ratchet and FIX slide.
- Movable system NORDIC without straps, ratchet and FIX slide

Part number: 1401001071

Part number: 130100107

Part number: 1301001071



Complete movable FIX Strap system med 13 cargo securing straps. For 12,5-14m trailers

Includes, 10x2400mm C-tracks, 2x1500 C-track,
32 X Bracket 40, 14 x Joining/end bracket 80
13 x FIX bungee roller suspension units
13 x FIX 9,5+0,5m, 50mm ratchet straps complete with slide
adjusters & claw hooks.

Part number: 140100113

(The length of the straps is adapted to the inner height of the trailer)

Versions:

- Complete movable FIX Strap system NORDIC (see above) with 13 cargo securing straps.
- Movable system without straps, ratchet and FIX slide.
- Movable system NORDIC without straps, ratchet and FIX slide

Part number: 1401001131

Part number: 130100113

Part number: 1301001131



FIX suspension movable unit 8mm

FIX sliding bungee roller carriage suspension units

Part number: 1300001

Versions:

- FIX suspension movable unit 8mm with 2 pcs FIX Slide (1448001)
- FIX suspension movable unit 8mm NORDIC
- FIX suspension movable unit 8mm NORDIC with 2 pcs FIX Slide (1448001)

Part number: 1300101

Part number: 1300007

Part number: 13000071



FIX bungee suspension fixed unit 8mm
FIX bungee for fixed mounting

Part number: 1300020

Versions:

- FIX suspension fixed unit 8mm with 2 pcs FIX Slide (1448001)
- FIX suspension fixed unit 8mm NORDIC
- FIX suspension fixed unit 8mm NORDIC with 2 pcs FIX Slide (1448001)

Part number: 13000201

Part number: 1300022
Part number: 13000221



C-track 1000mm
C-profil for FIX suspension system 1000mm
C-track 1500mm
C-profil for FIX suspension system 1500mm
C-track 2400mm
C-profil for FIX suspension system 2400mm

Part number: 1392005

Part number: 1392006

Part number: 1392024



Bracket 40
Bracket for C-track 40mm

Part number: 1391001



Join/end bracket 80
Join/end bracket for C-track 80mm

Part number: 1391002



End stop screw C-track
End stop Screw for the c-track

Part number: 1392045



Cargo securing strap complete with ratchet and FIX Slide

FIX Strap 50mm x 9,5m+0.5m Red webbing ratchet lashing units EN 12195-2 LC 2500 daN C/w FIX Slide adjuster system

SHF 50 daN, STF 320 daN

Part number: 104101409



FIX Ratchet 0,5

0.5m ratchet tensioner ends with wire J hook d16mm

50mm

SHF 50 daN, STF 320 daN

LC 2500 daN

Part number: 1291014



FIX Ratchet 0,33

Ratchet with hook d16mm L 0,33m

50mm

SHF 50 daN, STF 320daN

LC 2500 daN

Part number: 1291102



FIX Ratchet with hook 0,18

Hook with lock

50mm

SHF 50 daN, STF 300 daN

LC 25 kN

Part number: 1291077



FIX ROAD

FIX Road can be used for most transports, both on flat beds and in covered cargo spaces. Since the cover moves on the rails, it can be quickly and easily placed over the cargo. The system improves the driver's safety and streamlines the load-securing process.

FIX Road consists of our suspension system, which runs on rails at the edges of the ceiling, and a durable cargo-securing cover with integral securing straps on both sides. The lashing capacity (LC) for each anchor point on FIX Road is 2,500 daN.

FIX Road can be supplied as a full-length system (single-element) or in several individual sections (multi-element).



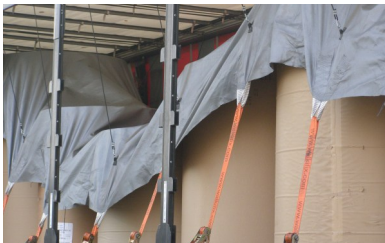
FIX ROAD 8,2x2,9 System

Part number: 1011007082

Complete FIX ROAD system for 7-8 m trailer

1 X FIX Road 8,2x2,9 Cargo Securing tarpaulin units acc. to EN 12195-2 LC 2,500 daN 2 x 7 Lashing straps length 2,5m, 14 X 0.5m x 50mm ratchet tensioner ends, 7 X FIX sliding Bungee Roller carriage suspension units, 6 X 2,400mm FIX Track 'C' section suspension tracks, 1 X 1,000mm FIX Track 'C' section suspension tracks, 18 X F40 mounting brackets, 10 X F80 joining and end brackets.

(The length of the straps is adapted to the inner height of the trailer)



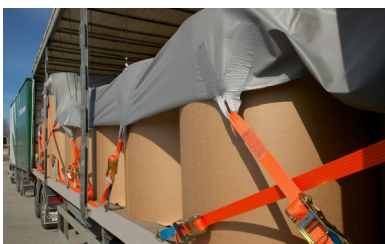
FIX ROAD 14,7x2,9 System

Part number: 1011012147

Complete FIX ROAD system for 13.6 m trailer

1 X FIX Road 14,7x2,9 Cargo Securing tarpaulin units acc. to EN 12195-2 LC 2,500 daN 2 x 12 Lashing straps length 2,5m, 24 X 0.5m x 50mm ratchet tensioner ends, 12 X FIX sliding Bungee Roller carriage suspension units, 10 X 2,400mm FIX Track 'C' section suspension tracks, 2 X 1,500mm FIX Track 'C' section suspension tracks, 32 X F40 mounting brackets, 14 X F80 joining and end brackets.

(The length of the straps is adapted to the inner height of the trailer)



FIX Road 1,7m X 2,9m Cargo Securing tarpaulin unit

Part number: 1011002

FIX Road 3,0m X 2,9m Cargo Securing tarpaulin unit

Part number: 1011003

FIX Road 4,3m X 2,9m Cargo Securing tarpaulin unit

Part number: 1011004

FIX Road 5,6m X 2,9m Cargo Securing tarpaulin unit

Part number: 1011005

FIX Road 6,9m X 2,9m Cargo Securing tarpaulin unit

Part number: 1011006

FIX Road 8,2m X 2,9m Cargo Securing tarpaulin unit

Part number: 1011007

FIX Road 9,5m X 2,9m Cargo Securing tarpaulin unit

Part number: 1011008

FIX Road 10,8m X 2,9m Cargo Securing tarpaulin unit

Part number: 1011009

FIX Road 12,1m X 2,9m Cargo Securing tarpaulin unit

Part number: 1011010

FIX Road 13,4m X 2,9m Cargo Securing tarpaulin unit

Part number: 1011011

FIX Road 14,7m X 2,9m Cargo Securing tarpaulin unit

Part number: 1011012

FIX Road 16,0m X 2,9m Cargo Securing tarpaulin unit

Part number: 1011013

FIX Road 17,3m X 2,9m Cargo Securing tarpaulin unit

Part number: 1011014

FIX Road Cargo Securing tarpaulin unit acc. EN 12195-2

LC 2500 daN

(The length of the straps is adapted to the inner height of the trailer)



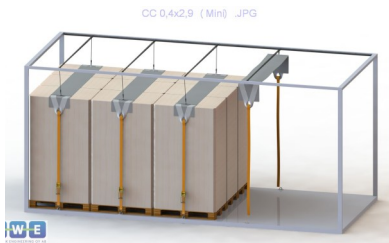
FIX Mini 0,4 7 System

Part number: 101103007

Complete FIX Mini system for 7-8 m trailer.

Includes 7 X FIX Mini 40cm wide x 2.8m cargo securing tarpaulin units, 14 X 0.4m x 50mm ratchet tensioner ends, 7 X FIX sliding bungee roller carriage suspension units, 6 X 2,400mm FIX Track 'C' section suspension tracks, 1 X 1,000mm FIX Track 'C' section suspension tracks, 18 X F40 mounting brackets, 10 X F80 joining and end brackets.

(The length of the straps is adapted to the inner height of the trailer)



FIX Mini 0,4 13 System

Part number: 101103013

Complete FIX Mini system for 13.6 m trailer.

Includes 13 X FIX Mini 40cm wide x 2.8m cargo securing tarpaulin units, 26 X 0.5m x 50mm ratchet tensioner ends, 13 X FIX sliding bungee roller carriage suspension units, 10 X 2,400mm FIX Track 'C' section suspension tracks, 2 X 1,500mm FIX Track 'C' section suspension tracks, 32 X F40 mounting brackets, 14 X F80 joining and end brackets.

(The length of the straps is adapted to the inner height of the trailer)



FIX Maxi 0,8 7 System

Part number: 101108007

Complete FIX Maxi system for 7-8 m trailer.

Includes 7 X FIX Maxi 80cm wide x 2.8m cargo securing tarpaulin units, 14 X 0.5m x 50mm ratchet tensioner ends, 7 X FIX sliding bungee roller carriage suspension units, 6 X 2,400mm FIX Track 'C' section suspension tracks, 1 X 1,000mm FIX Track 'C' section suspension tracks, 18 X F40 mounting brackets, 10 X F80 joining and end brackets.

(The length of the straps is adapted to the inner height of the trailer)



FIX Maxi 0,8 13 System

Part number: 101108013

Complete FIX Maxi system for 13.6 m trailer.

Includes 13 X FIX Maxi 80cm wide x 2.8m cargo securing tarpaulin units, 26 X 0.5m x 50mm ratchet tensioner ends, 13 X FIX sliding bungee roller carriage suspension units, 10 X 2,400mm FIX Track 'C' section suspension tracks, 2 X 1,500mm FIX Track 'C' section suspension tracks, 32 X F40 mounting brackets, 14 X F80 joining and end brackets.

(The length of the straps is adapted to the inner height of the trailer)



FIX Mini 40cm Wide

Part number: 1011000

FIX Maxi 80cm Wide

Part number: 1011080

FIX Maxi 40/80cm wide x 2.8m cargo securing tarpaulin units EN 12195-2 LC 2500 daN

(The length of the straps is adapted to the inner height of the trailer)



C-track 1000mm

C-profil for FIX suspension system 1000mm

C-track 1500mm

C-profil for FIX suspension system 1500mm

C-track 2400mm

C-profil for FIX suspension system 2400mm

Part number: 1392005

Part number: 1392006

Part number: 1392024



Bracket 40

Bracket for C-track 40mm

Part number: 1391001



Join/end bracket 80

Join/end bracket for C-track 80mm

Part number: 1391002



End stop screw C-track

End stop Screw for the c-track

Part number: 1392045



FIX suspension movable unit 8mm

FIX sliding bungee roller carriage suspension unit

Part number: 1300001

FIX suspension movable unit 8mm NORDIC

FIX sliding bungee roller carriage suspension unit

Part number: 1300007



FIX bungee suspension fixed unit 8mm

FIX bungee for fixed mounting

Part number: 1300020

FIX bungee suspension fixed unit 8mm NORDIC

FIX bungee for fixed mounting

Part number: 1300022



FIX Ratchet 0,5

0.4m ratchet tensioner ends with wire J hook d16mm
50mm
SHF 50 daN, STF 300 daN
LC 2500 daN

Part number: 1291014



FIX Ratchet 0,33

Ratchet with hook d16mm L 0,33m
50mm
SHF 50 daN, STF 300daN
LC 2500 daN

Part number: 1291102



FIX adjustable short end

FIX adjustable short end.
LC 2500 daN
50mm

Part number: 1411100



FIX ROAD SPECIAL PRODUCTS



FIX Timber complete system securing cargo that is not close to front bulkhead.

Part number: 108112700

FIX Timber, is a further development from FIX Road Cargo Securing System to secure sawtimber and other heavy and high load from sliding or tipping forward. Sometimes it is necessary to load the cargo with some distance to the front bulkhead due to weight distribution.

Includes: 4 X 1000mm C-track, 6 X Join/end bracket 80mm, 4 X bracket 40mm, 4 X setscrew for c-track, 6 FIX ratchet LC 2500 daN, 1 X 8mm FIX movable suspension unit, 1 X 10mm FIX movable suspension unit.



FIX Timber cargo securing tarpaulin unit

Part number: 1081127

Only FIX timber cargo securing tarpaulin unit **without** suspension units, ratchets and tracks.



FIX Steel Cargo securing for the transport of heavy materials

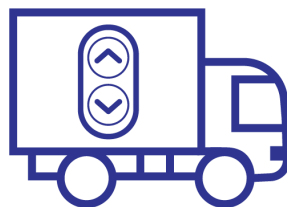
Storlek: **Part number:**

0,9m X 2,9m **1081202**

1,3m X 2,9m **1081203**

1,7m X 2,9m **1081204**

Heavy material that due to weight or weight distribution is loaded in low units, bundles or packages, which are not placed in close proximity to the front bulkhead, should be secured with straight lashings to avoid forward movement at e.g. braking. In order for these to be safely transported, NWE Network Engineering Ab has developed a special version of FIX Road load securing tarpaulin. The tablecloth in picture (0.9x2.9m) has 2 lashes per side to be tightened around one end of the load. Load securing capacity for the whole is LC 100 kN (10 tonnes) and the breaking strength over 20 tonnes.



FIX TRUCK-SAFE

FIX Truck-Safe is a unique, patented system that secures your cargo in seconds using a proven and tested method that has been in use for decades. The system is manufactured and tested according to the EN 12195 -2 standard and meets all national requirements as well as all requirements of EU legislation, for the securing of cargo. The lashing capacity (LC) for each anchor point on the cargo-securing cover is 2,500 daN.

FIX Truck-Safe uses the same cargo securing fabric as our manual versions FIX Road and FIX Marine, but with FIX Truck-Safe, pneumatic tensioners pull the fabric down and tension it to a preadjusted force. When loading is finished, securing the cargo is done by simply pushing a button. The system can also supervise the tension and re- tension if needed. Tensioning takes between a few seconds and a minute.

All FIX Truck-Safe systems are custom made, please contact us for more information; info@nwe.fi



FIX Truck-safe for side openable cabinet

Automatic cargo securing system for trailers with side openable cabinets.

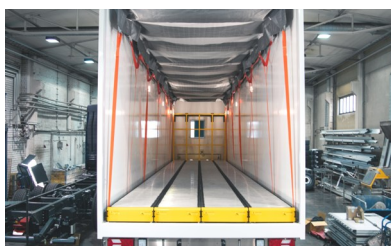
All FIX Truck-safe system are custom made for each order.



FIX Truck-safe for lifting chapel

Automatic cargo securing system for lifting chapel.

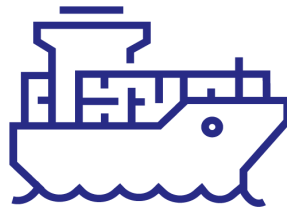
All FIX Truck-safe system are custom made for each order.



FIX Truck-safe for cabinets with fixed walls

Automatic cargo securing system for cabinets with fixed walls, Can get with or without transporting floor.

All FIX Truck-safe system are custom made for each order.



FIX MARINE

FIX Marine is our solution for securing and protecting loads at sea, whether on the open surface of a vessel or stowed in the cargo space.

The system consists of our reinforced, made-to measure, specialized cover with integral securing straps on both sides. The lashing capacity (LC) for each anchor point on the cargo-securing cover is 2,500 daN and extra straps on the ends also allow for straight lashing.

Securing even very tall loads on board, becomes an easier and much safer process than with traditional chains and edge protectors. Therefore, it is used on a frequent basis, especially for paper transports with tall, upright rolls.



FIX RORO 13,4x3,4 System

13 FIX Marine system for 40' Mafi-rolltrailer or RoRo-cassette

FIX RORO 13,4 x 3,4m cargo securing tarpaulin units

EN 12195-2 LC 2,500 daN

Lashing strap length acc. to request

Artikelnr: 1021011



FIX STOW 13,4x3,4 System

13 FIX Marine system in the hold of the ship.

FIX STOW 13,4 x 3,4m cargo securing tarpaulin units

EN 12195-2 LC 2,500 daN

Lashing strap length acc. to request

Artikelnr: 1021111



FIX MARINE weather protection

FIX Marine can be adapted with weather protection to protect the load in the best way.

Artikelnr: 1291075

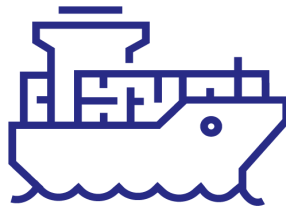


Hook

Casted 50mm

MBL

Artikelnr: 1292008



Hook
50mm D32mm
LC 25 kN

Artikelnr: 1292003



Reserve strap
50mm
LC 2500 daN

Artikelnr: 1491101



Short end with D-ring
50mm
LC 2500 daN

Artikelnr: 1411103



FIX ratchet 0,5 with d32mm J hook
0.5m Ratchet tensioner ends with wire J hook d32mm
50mm
SHF 50 daN, STF 320 daN
LC 2500 daN

Artikelnr: 1291075

SPARE PARTS & ACCESSORIES



Loose screwhook

Loose screwhook to FIX Bungee cord 8mm

Part number: 1392002

Socket for hook assembly

A special socket for easier assembly of the screwhook (1392002)

Compatible with a power tool. See page 12

Fits: FIX Strap, FIX Mini, FIX Maxi, FIX ROAD

Part number: 1991010



Repair kit FIX Bungee cord 8mm

FIX Bungee cord + one mounted 1392002 screwhook and one loose.

Fits: FIX Strap, FIX Mini, FIX Maxi, FIX ROAD

Part number: 1391009

Repair kit FIX Bungee cord 8mm NORDIC

FIX Bungee cord NORDIC + one mounted 1392002 screwhook and one loose.

Fits: FIX Strap, FIX Mini, FIX Maxi, FIX ROAD

Part number: 1391012



Socket for hook assembly

A special socket for easier assembly of the screwhook (1392002)

Part number: 1991010



Repair kit FIX Bungee Cord 10mm

Rubbercord 10mm with 1X mounted carabiner, 1X loose carabiner and 2X clamping rings.

Part number: 1391011

Repair kit Bungeehook

1X carabiner och 2X clamping rings for 10mm FIX suspension units.

Part number: 1392011



FIX suspension movable unit 8mm

FIX sliding bungee roller carriage suspension unit 8mm

Fits: FIX Strap, FIX Mini, FIX Maxi, FIX ROAD

Part number: 1300001

FIX suspension movable unit 8mm NORDIC

FIX sliding bungee roller carriage suspension unit 8mm

Fits: FIX Strap, FIX Mini, FIX Maxi, FIX ROAD

Part number: 130007



FIX suspension movable unit 8mm for SCB Trailers
FIX sliding bungee roller carriage suspension units 4.0
meter for SCB Trailers

Fits: FIX Strap, FIX Mini, FIX Maxi, FIX ROAD

Part number: 1300011



FIX bungee suspension fixed unit 8mm
FIX bungee for fixed mounting

Part number: 1300020

FIX bungee suspension fixed unit 8mm NORDIC
FIX bungee for fixed mounting

Part number: 1300022



FIX Slide
FIX Slide to connect the strap with the suspension system

Part number: 1448001



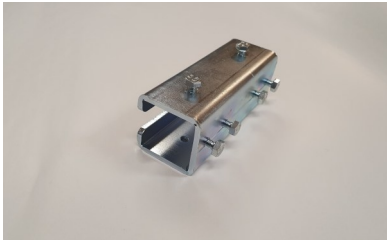
Wall bracket
Wall bracket for FIX C-track

Part number: 1392035



FIX C-bracket
FIX C-bracket for C-track

Part number: 1392020



Joining profile

Joining profile for FIX C-track

Part number: 1392028



Roof bracket

Roof bracket for FIX C-track

Part number: 1392036



Hook with locking

Straphook with locking

50mm

LC 25kN

Part number: 1292002



D-ring

50mm

LC 25 kN

Part number: 1392043



Hook

Strap hook

50mm d16mm

LC 25 kN

Part number: 1292001



Adjustable Hook
Adjustable strap hook
50mm
LC 25 kN

Part number: 1292007



Hook
Casted
50mm
MBL

Part number: 1292008



Hook
Strap hook
50mm D32mm
LC 25 kN

Part number: 1292003



Ekeri tension roller/dumbbell
Tension roller for Ekeri cargo securing system
Also fits Bussbygg and Limetec
Aluminium
50mm
LC 25 kN

Part number: 1292081



Pipe hook
50mm
LC 25 kN

Part number: 1292006



Flat hook
50mm
LC 25kN

Width: **Part number:**
39mm **1292010**
48mm **1292005**

Flat hook
50mm
LC 11kN

Width: **Part number:**
35mm **1292038**



D-ring
50mm
LC 0,5kN
6mm Ø

Part number: 1392003



Adjustable strap lock
50mm
LC 25kN

Part number: 1292013



Cargo securing straps

We produce 50mm lashing bands in the lengths and designs that are requested, in the colors orange, red and blue, more colors can be custom-ordered.



Short end with D-ring
50mm
LC 2500 daN

Part number: 1411103



Replacement strap

50mm
LC 2500 daN

Part number: 1491101



FIX adjustable short end

FIX adjustable short end.
50mm
LC 2500 daN

Part number: 1411100



FIX Ratchet with hook 0,18

Hook with locking
50mm
SHF 50 daN, STF 300 daN
LC 25 kN

Part number: 1291077



FIX Ratchet 0,33

Ratchet with hook d16mm L 0,33m

Part number: 1291102

FIX Ratchet 0,4

Ratchet with hook d16mm L 0,4m

Part number: 1291014

50mm, SHF 50 daN, STF 300daN, LC 2500 daN



FIX ratchet 0,4 with d32mm J hook

0.4m Ratchet tensioner ends with wire J hook d32mm
50mm
SHF 50 daN, STF 300 daN
LC 2500 daN

Part number: 1291075



Cargo securing straps LC 2500 daN
With standard 0,4m ratchet and hooks
50mm
SHF 50 daN, STF 300 daN, LC 2500 daN
Red, Orange and Blue

LC/Length: **Part number:**

LC 2500 7,6+0,4m: **104101117**
LC 2500 9,6+0,4m: **104101119**



Cargo securing straps ERGO LC 2500 daN
With 0,4m Ergo ratchet and hooks
50mm
SHF 50 daN, STF 500 daN, LC 2500 daN
Red, Orange and Blue

LC/Length: **Part number:**

LC 2500 7,6+0,4m: **104101207**
LC 2500 9,6+0,4m: **104101209**



Cargo securing straps LC 2000 daN
With standard 0,4m ratchet and hooks
50mm
SHF 50 daN, STF 300 daN, LC 2000 daN
Yellow

LC/Length: **Part number:**

LC 2000 7,6+0,4m: **104101107**
LC 2000 9,6+0,4m: **104101109**



Ratchet with short handle
Ratchet with short handle without strap
50mm
LC 10 kN

Part number: 1292198



Ratchet with short handle
Ratchet with short handle without strap
50mm
LC 25 kN

Part number: 1292199



FIX Ratchet

Standard ratchet without strap
50mm,
LC 25 kN

Part number: 1292100



FIX Ergo ratchet

Ratchet with a long handle without strap
50mm
LC 25 kN

Part number: 1292301



FIX Check

A mechanical measuring tool for checking the approximate tension level.

FIX Check gives an indication of the tension in the strap around the cargo. This measuring tool shows you approximately the amount of force that a strap has been pulled taut with. Since the tension level in a securing strap can vary up to 50% according to various factors, e.g. depending on the strap material, the arm strength of the person securing the cargo and the length of strap around the ratchet axle, it is important to check what the actual force is.

Part number: 1882001



FIX Measure

A unique electronic measuring instrument for quick and exact checking of the tension force in a taut cargo-securing strap.

The accuracy of the measurement result is +/- 20 daN. The measuring instrument weighs only 1.7 kg with a battery (9V).

Part number: 1882003







NWE NETWORK ENGINEERING OY AB

Uppstutåget 2

64200 Närpes

Finland

+358 622 50 114

info@nwe.fi

www.nwe.fi/en/